

Host Plant Record of *Paederolanguria oshimana* (MIWA) (Coleoptera, Erotylidae, Languriinae)

Wataru TOKI

Center for Ecological Research, Kyoto University, Hirano 2–509–3, Ôtsu-shi, Shiga, 520–2113 Japan
E-mail: watarutoki@08.alumni.u-tokyo.ac.jp

Paederolanguria MADER, 1939 is a small genus in the tribe Languriini (Erotylidae, Languriinae) consisting of 12 species, and distributed in Asia (LESCHEN & WĘGRZYNOWICZ, 1998). The biology has been poorly understood: two adults of *P. oshimana* (MIWA, 1936), which is endemic to Amami-Ôshima Island, Japan, were found on leaves of the fern *Asplenium nidus* L. (Aspleniaceae) (KUROSAWA, 1968). However, it has been unclear that whether *P. oshimana* uses *A. nidus* as a host plant.

In the present paper, I report that the fern *Thelypteris parasitica* (L.) TARDIEU (Thelypteridaceae) is the host plant of *P. oshimana* larvae. Fourteen *P. oshimana* adults were found on leaves and stalks of living *T. parasitica* in Mt. Yuwan, Uken-son, Amami-Ôshima Is., Kagoshima Pref., Japan on 22 May, 2013. Four living larvae were also found, when four living *T. parasitica* stalks with small holes were dissected. The larva-present stalks were collected and placed on Petri dishes of 9 cm in diameter. Then the larvae were reared at 25°C in a dark condition. A larva pupated by 19 July and reached adulthood in August, 2013. A larva was preserved in 99.5 % ethanol for further research and the other larvae died. Those results indicate that a *P. oshimana* larva is a stem borer of *T. parasitica*, which provides the first biological information of larvae in the genus *Paederolanguria*.

Specimens examined. 14 exs., Mt. Yuwan, 408 m alt., Uken-son, Amami-Ôshima Is., Kagoshima Pref., Japan, 28°17'29"N, 129°19'22"E, 22.V.2013, W. TOKI leg., on the leaf and stalk of living *T. parasitica*; 4 larvae, same locality, date and collector, in the stalk of living *T. parasitica*.

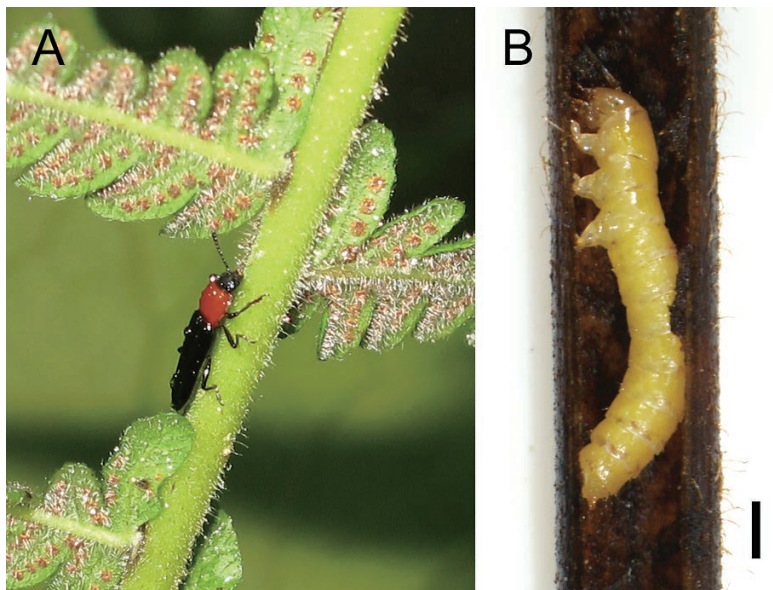


Fig. 1. *Paederolanguria oshimana* (MIWA). — A, An adult on a stalk of *Thelypteris parasitica*; B, a fully grown larva in a stalk of *T. parasitica*. Scale bar: 1 mm.

The author would like to thank A. KAWAKITA for the identification of the fern. This study was supported by JSPS Grant-in-Aid for Scientific Research for Young Scientists (B) (no. 25840153) and JSPS Grant-in-Aid for JSPS Fellows (no. 201501207).

References

- KUROSAWA, Y., 1968. [Host plants of five species of Languriidae.] *Coleopterists' News, Tokyo*, (4): 6. (In Japanese.)
LESCHEN, R. A. B., & P. WĘGRZYNOWICZ, 1998. Generic catalogue and taxonomic status of Languriidae (Cucujoidea). *Annales Zoologici, Warszawa*, **48**: 221–243.

Manuscript received 28 February 2016;
revised and accepted 15 March 2016.